

2023 Ransomville Speedway Rulebook



General Rules and Specifications

Ki Po Motors Street Stocks
Sunflowers of Sanborn Mini Stocks
Kevin's Carpet Cleaning & Flood Services Novice Sportsman
Investor's Services Sportsman
DIRT Krown Collision 358 Modifieds

Track Vision LLC
PO Box 286, Ransomville, NY 14131
716-791-3602

ransomvillespeedway.com

RANSOMVILLE SPEEDWAY RULES AND PROCEDURES

The officials of Ransomville attempt to be fair and yet maintain a certain amount of firmness in these rules to keep stock car racing on a par with the leading tracks of the United States. Our objectives have been Fairness and Safety. With each new season, we attempt to keep in step with the times in the face of rising costs. We have developed rules to minimize the cost of competition. Every organization, to be successful, must have rules and enforce them fairly. The cooperation of officials and competitors will assure our sport of a bright future. The management reserves the right to change any rule or rules if they feel it is necessary, and refuse any protest if they feel it is unnecessary and being used for harassing reasons. All fines, and/or suspensions will be in effect at all Ransomville events. Ransomville officials in their professional discretion shall determine the interpretation and invoking of the rules published herein.

TRACK POLICY

The speedway is private property. Any person on this property without the permission of Ransomville owners is guilty of trespass and subject to penalties prescribed by law. Through your license and registration, you have been given the authority to be on this property in conjunction with racing activities. However, the Administration reserves the right to revoke and cancel this authority at any time that it is felt that your presence or conduct is not in the best interests of racing, your fellow competitors, the fans, management, and employees of Ransomville.

It is ultimately the obligation of each participant to insure that their conduct and equipment comply with all applicable rules and regulations, which may be amended from time to time. No express or implied warranty of safety shall result from publication of, or compliance with, these rules. They are intended as a guide for the conduct of the sports and are in no way a guarantee against injury or death to participants, spectators, or to others.

SOCIAL MEDIA POLICY

Regarding social media posts on Facebook, Twitter, Message Boards, etc.

Everyone must be aware that posting in social media is like speaking into a live microphone. Media outlets can and quite often do pick up on social media comments. Be aware that all teams depend on their sponsors to race weekly. Everyone should respect the value of our fan base and sponsors. By the time an offensive post or tweet shows up, it is too late to stop the spiraling effect for Ransomville Speedway. You may feel that you cannot control the comments made in support of your initial comments, but that is not the case. Negative social media in any form about Ransomville Speedway, Ransomville Speedway officials, or racers will not be tolerated. Depending on the severity of the incident, fines or suspensions may be assessed. Please help us by speaking with your entire team of this policy.

PARTICIPANTS BENEFITS

Posted on the office wall is a certificate of benefits which covers everyone signed in the Pits. You and your crewmembers are covered with as broad benefits as the racers in the major racing associations in the U.S. If any questions or problems come up about benefits, contact the Speedway management. K&K insurance does not cover ambulance rides.

LIABILITY INSURANCE

Our liability insurance insures the racetrack, the car owner, driver, and sponsors.

GENERAL INFORMATION

Every driver must inspect the racing surface and racetrack area to learn any defects, obstructions, or anything that in their opinion is unsafe and the driver shall report that condition in writing to the Race Director.

Any driver entering any racing event is considered to have inspected the track and agreed all conditions are satisfactory, if not, **THE DRIVER SHOULD NOT RACE**. The further indicated that the driver is aware of these risks with full awareness and knowledge.

The speedway assumes no responsibility for damages to or loss of your equipment, vehicle, or any parts by any means, whatsoever.

MINORS: Children under 17 years old. Require parents or guardians to fill out and sign a release form. A birth certificate is required.

CLAIM INFORMATION AND/OR INJURY INFORMATION

It shall be the personal responsibility of all participants to refrain from taking part in any **RANSOMVILLE SPEEDWAY** event if they have been injured, are under the influence of alcohol or any controlled substance or are in any way other than medically fit. **RANSOMVILLE SPEEDWAY** management, at their sole discretion, may deny participation of a person based on past medical conditions that may affect the safety of that person or other participants at a **RANSOMVILLE SPEEDWAY** competition. It is the personal responsibility of all participants to report any injuries suffered at **RANSOMVILLE SPEEDWAY** event **BEFORE** leaving the property of the speedway where the injury occurred. The participant must have an accident report filled out and given to **RANSOMVILLE SPEEDWAY** management and/or pre-designated representative before leaving the premises. Failure to report an injury prior to leaving the speedway may nullify all injury claims to the speedway's insurance policies. If you have any questions or concerns, please contact the **RANSOMVILLE SPEEDWAY** office for clarification.

MEMBERSHIPS

1. Ransomville honors both DIRT Memberships and Ransomville Memberships. Drivers, Owners, and/or Crew Members may purchase a Ransomville Membership. Members are subject to conform to the rules herein.
2. Only Ransomville members will share in any season-ending awards/point funds/feature winner plaques, etc. If a driver and owner separate, both must be members to share point fund.
3. A membership is issued to one person and non-transferable. The license must be shown at each race meet in order to get a pit pass, and can only be used once at each race meet. Season end awards will be distributed at the annual awards dinner or opening day 2023.
4. Sunflowers of Sanborn Mini Stocks, Ki-Po Motors Street Stocks, Investor's Services Sportsman, Novice Sportsman, Krown Collision 358 Modified memberships will be \$75.00.
5. In the event a car is owned by a partnership or corporation, the membership will be issued to one person only. But corporate names may also appear on the membership application and license, and all point fund money will be issued in the name of the corporation.
6. Any member who permits someone else to use his/her membership license shall be fined not less than \$100 and/or be disqualified.
7. The Sheriff(s) reserve the right to eject and/or arrest anyone at their discretion.

INCLEMENT WEATHER / CANCELLATION OF AN EVENT

In the event of rain or other conditions, it may be necessary for RANSOMVILLE SPEEDWAY management to adjust the order of the event schedule, length of races, practices and qualifying sessions, or to stop the program completely. Should this occur, the management shall make every effort to resume the schedule in a timely fashion if conditions warrant. It is their sole discretion as to what decision they make and their decision is final. Rain Check Policy: Cancellation or delay of an event will be the speedway management's decision. No money will be refunded for tickets or pit passes purchased.

FEATURE EVENT COMPLETION - One lap past the halfway point in a feature shall constitute a complete race in the event a race is stopped due to bad weather.

HANDICAPPING

1. A car number will be reserved when buying a track license. Whenever possible, requested numbers will be assigned, but track management reserves the right to issue numbers in order to prevent duplications.
2. All numbers will be limited to 1, 2, or 3 digits. If 3 digits are used, two shall be primary numbers.
3. If numbers 3, 6, or 9 are used, make sure they are distinguishable. Do not let nerf bars block visibility.
4. The number of cars to be qualified in each heat will be announced before the first heat for each division.
5. If a driver qualifies 2 or more cars, the driver must drive the last car qualified in the feature race. The other cars are not eligible. Car and driver must be qualified except for guaranteed starters. In the event

the car the driver qualified is unable to compete, the driver may use another car but must start in the scratch position.

6. All driver changes must be recorded to the pit steward/race director. All drivers that change cars must go to the rear (driver's responsibility).
7. On postponed events, the driver is qualified.
8. No car or driver can compete in two (2) classes on a sanctioned event, unless approved by the race director.
9. Top 5 in point standings are guaranteed starters.
10. Driver and car must report to the pit steward by 6:30 to draw for starting position.
11. It is the driver's responsibility to read the pit notes each week. The notes are posted at the pit board each week.
12. Each week drivers will draw for their starting position for their heat.

Weekly draw format:

1 - 9 cars: 1 heat and TOP 4 to redraw.

10 – 13 cars: 2 heats and TOP 3 from each heat to redraw.

14 - 17 cars: 2 heats and TOP 4 from each heat to redraw.

18 – 20 cars: 3 heats and TOP 3 from each heat to redraw.

21 – 24 cars: 3 heats plus a Consi

- TOP 4 from each heat to redraw.
- TOP 6 qualify from the heat.

25 – 27 cars: 3 heats plus a Consi

- TOP 4 from each heat to redraw.
- TOP 6 qualify from the heat.

28 – 36 cars: 4 heats plus a Consi

- TOP 3 from each heat to redraw.
- TOP 5 qualify from the heat

13. For drivers new to a division the management reserves the right to start that driver in the tail of the qualified cars or tail of the field for feature event depending on where the driver qualified for the driver's first 2 weeks. (excludes the Modified division).

GENERAL RULES – ALL DIVISIONS



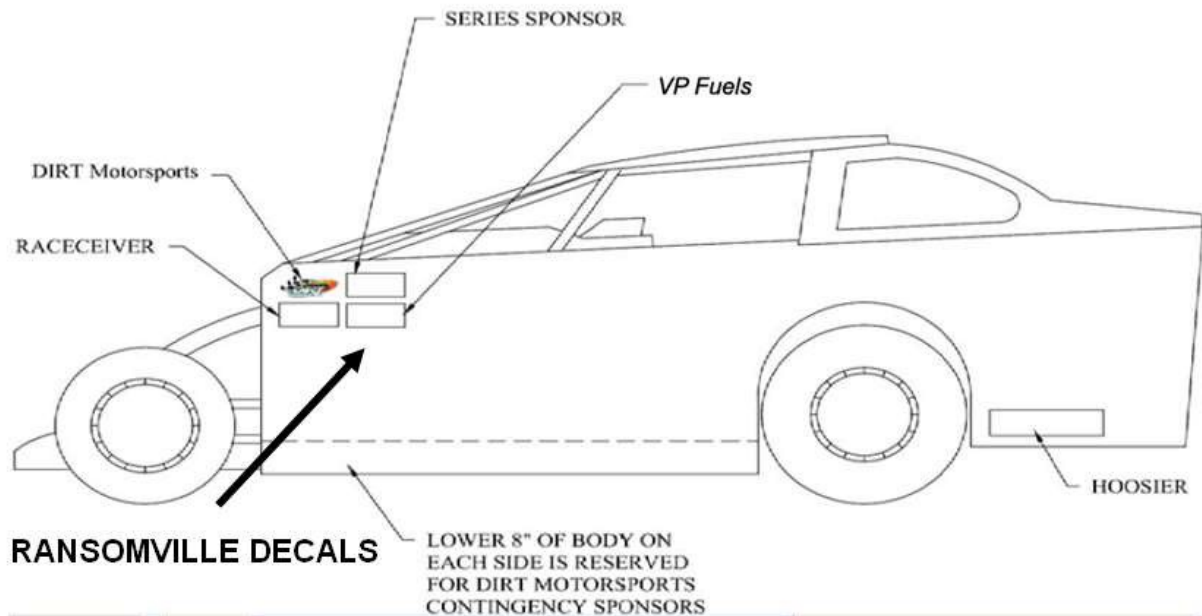
1. All cars should be neatly painted and carry numbers at least 18” high on both doors, roof, and rear back and 8” numbers on front. The use of number decals is acceptable if the number is legible. All classes will be required to have their name properly displayed on the car with at least 6-inch (6”) letters. No duplicate numbers. All cars to be adequately numbered with 18” high numbers on both sides, roof, and rear deck for scoring purposes consistent with the DIRT rules. No duplicate numbers. Cars must be neatly painted and lettered.
2. Take pride in your racecar and operation. Crews must also be neat and presentable. Be professional.
3. It is recommended that there be no solid black or dark blue paint jobs. All dark colored cars shall have a contrasting light color somewhere else on the car. This is for your safety.
4. Director of Tech reserves the right to request body sheet metal to be replaced and painted should it get beaten out too badly.
5. All vehicles shall have an ignition switch, which is easily accessible within the driver’s compartment. The ignition switch should be labeled ON/OFF with a bright colored paint.
6. The fuel shutoff valve shall be labeled ON/OFF with a bright color and mounted to the right side of the driver.
7. Two (2) throttle return springs and a steel toe loop in gas pedal is recommended.

8. All cars must carry operable fire extinguishers capable of putting out fuel and oil fires.
9. All cars must have a fire extinguisher mounted within reach of the driver. Fire extinguishers must weigh between three (3) and five (5) pounds. The only exception is if the car has an on board fire suppression system for the car.
10. NO drums for fuel on track premises. This is an insurance regulation.
11. AMB Transponders, i.e., one-way radios, will be mandatory for all divisions. The frequency used will be 454.0000 (instituted 2018 season).
12. All drivers must wear a 2010 or newer Snell “SA” approved full face helmet and a clean SFI driver’s suit free of rips, quilted or with underwear, gloves, foot socks and shoes to SFI specifications.
13. Head and neck restrain devices will be mandatory in all classes! The head and neck restraint must be SFI 38.1 approved and display a legible and valid SFI 38.1 label (Instituted in 2018).
14. No “FOR SALE” signs or any wording painted on the car that may be offensive. Information will be supplied in the pit area for announcements.
15. If a car has a part that no one else has, and it’s not mentioned in the rules, it’s not assumed legal. Ask first.
16. If something is not in the rulebook, DO NOT ASSUME IT’S LEGAL! Ask first!
17. Any removal of modifying of any part numbers or casting numbers will deem a part illegal and subject to disqualification.
18. These rules are current rules and supersede any rules from the past.

19. All decisions by the officials at the track involving race procedures are final.
20. All decisions by Tech Officials involving rules, rule clarification, disqualifications, etc. are final.
21. It is the responsibility of the driver and pit crew to read and understand any pit notes for each week. These notes are either posted on the pit board or handed out as a pit addendum sheet.
22. Any question about any of the rules will be handled the following during week regular business hours.
23. PURSE COLLECTION PROCEDURE - Payoff will be made after all cars have passed post-race technical inspection to the driver (or pre-arranged designated representative). Purse money will be distributed from the grandstand Main Office window following the event. Only those DESIGNATED will be allowed to pick up the purse money. No multiple pick-ups! RANSOMVILLE SPEEDWAY is not responsible for purse monies signed by other parties! Those not able to pick up their purse money may do so at the following event at the grandstand Main Office window.
24. **THE PROMOTOR RESERVES THE RIGHT TO CHANGE OR ALTER ANY RULE OR PROCEDURE AS DEEMED NECESSARY.**

CONTINGENCIES

Ample space must be left on a designated spot of the car, to be set forth by the officials, for participating RANSOMVILLE SPEEDWAY sponsor decals. For the Investor's Services Sportsman, Krown Collision 358 Modifieds, and Kevin's Carpet Cleaning & Flood Services Novice Sportsman Novices these decals must be displayed at all times in the following locations:



Ki-Po Motors Street Stocks and Sunflowers of Sanborn Mini Stocks



PROCEDURAL RULES– ALL DIVISIONS

1. All decisions by the officials at the track involving race procedures and tech are final. Videotapes are not admissible as evidence for protests.
2. Practice is scheduled before racing time. All practice laps are at the discretion of the starter. No practice whatsoever unless the starter, race director, pit steward, tow trucks, safety crew, and safety equipment are in position. Practice is for a set time with no guaranteed set number of warm up laps for each class.
3. No drinking of intoxicants by any participants allowed at any time before or during the racing program, or any evidence thereof by any driver, owner or crew member.
4. At all races, driver assumes responsibility for the action of their pit crew in every respect. The driver is the only spokesperson for the car and pit crew.
5. No one shall enter judge's tower during the racing program. All officials have radio or phone contact with the judge's tower and can straighten out any problem.
6. Anyone deliberately disobeying an order of any official may be subject to a fine and/or suspended. The car that they are connected with will not be allowed to participate in future events until fine is paid.
7. No excessive speeding in pit area.
8. Only safety crews and wrecker crews will be allowed on the track in the event of any accident. At no time will any of the driver's crew be allowed on the track.
9. No repairs to cars are to be made on the track at any time. You must pull off the track to make any repair no matter how minor. During

restarts, if a car needs any attention and pulls off the track for any reason, this car must restart in scratch position.

10. Each car will start each event on his/her own power or will go to the rear.
11. All equipment is subject to the approval of track officials. No equipment will be considered as having been approved by reason of having passed through inspection unobserved. Any equipment which does not conform to specifications or tolerances contained in this rule book will not be eligible for approval during 2023.
12. All cars must take the green flag to be eligible for payoff and points.
13. All drivers must be ready to compete and have their cars in line before each event enters the track or will be sent to the rear.
14. The starter has complete charge of track while racing. No protest allowed on starter's decision.
15. If there is an accident before the first lap is official, the field will be completely restarted with the car or cars bringing out the caution going to the rear of the field.
16. On a caution or red flag, any car going to the infield or pit area must return to the rear of the field.
17. The yellow flag signifies caution and the caution flag will be given to the first car passing the starter. After the yellow flag is displayed, cars must hold their position until either the green flag is again displayed or the red flag, which would automatically stop the race.
18. When caution is displayed, the lap of which the leaders are about to complete will be counted. Likewise, when the race is restarted, the next completed lap will also be counted.

19. Any car falling out of position during a caution flag must pick up their position whenever the driver picks up their momentum again. If the field passes the car, the driver must fall in at the rear. The only exceptions are if the car is coming to the start-finish line to either check their position or inform the starter of track hazards. (This rule is designed to keep the race under as little delay as possible. Sometimes it will work to a driver's advantage, other times disadvantage, but as long as the rules are understood, there will be little or no problem getting restarted.) NO racing back to Start/Finish line.
20. Any car involved in or spins to avoid an accident where the yellow flag is displayed must pick up position in the field wherever they fall in. All others must maintain position.
21. Passing under caution will be penalized two (2) positions for each car passed. When the caution flag flies, cars will fall into single file, passing car giving way to the lead car. The passing car must be completely ahead to assume the forward position.
22. The driver receiving the checkered flag in any feature race must bring their car to the starting line and must participate in victory lane ceremonies. The race winner is to remain in victory lane until released by track official in charge of the event.
23. For DIRT 358 and DIRT Sportsman features, restarts will be double file until the final five laps, and then single file. All other classes will be double until ½ way. The track reserves the right to revert to a single file restart at any time if there have been excessive cautions, as determined by the Race Director.
24. Any driver causing excessive delays in a race, such as spinning out three times on his/her own will be disqualified at starter's discretion.
25. Any driver guilty of violating any of the flag or light rules will be penalized at the discretion of the starter.

26. Rough riding will be left up to the discretion of the starter. If he feels that the occasion warrants, whether intentional or not, the driver may be penalized accordingly for their actions. Fined driver will not be allowed to compete until the fine is paid.
27. Once the field of cars is lined up and the starter signals the drivers to be ready, preliminary laps may be set at the discretion of the officials. During the preliminary laps, if a car does not maintain its designated position in the starting field, the car may be repositioned in their discretion.
28. The race begins at the commencement of pace laps, but scoring and official distance begins when the green flag is displayed.
29. Any drivers caught jumping before the green flag is displayed will be set back two (2) cars for every car passed prior to the race start.
30. Any driver new to a division will be under a probationary period.
31. No person will be permitted to ride on the outside of a car at any time.
32. Cars going through tech are allowed to have three (3) of their crew working on the car. Please help us to keep others away from the car going through tech. It will allow you and us to do our jobs quicker.
33. If a car spins and causes a yellow, that car will restart wherever they pulled back into line, as determined by the Race Director. If a car pulls out of line during a caution period (for example, spinning to avoid an accident), that car will restart wherever they pulled back into line, as determined by the Race Director. Drivers that spin out on the track must try to get going immediately and not stop the race. If anyone is deemed to be deliberately stopping a race, they will be black-flagged and relegated to the pits.

34. When given the black flag, the driver has one lap to pull off the track. The car will be scored for only one lap after it is given the black flag.
35. AMB Transponders, i.e. one-way radios, will be mandatory for all divisions. The frequency used will be 454.0000.
36. UNSPORTSMANLIKE CONDUCT: There will be no harassment of officials, safety crews, ambulance crews, spectators or other drivers and crews. Any unsportsmanlike conduct suspension of the driver and car. Drivers are responsible for the actions of all pit crew members and will be penalized accordingly for their actions. Anyone who willfully or maliciously uses a race car on the track or in the pits to injure, destroy or damage another person or property will be suspended plus subject to arrest. You are all professionals and are expected to conduct yourselves accordingly. The driver and pit personnel should stay in their designated pit spaces. Anyone in an argument or fight at another team's pit area will automatically be at fault and suffer the penalties designated to the offense.
37. Any driver who exits their car without permission or an emergency may be disqualified from that event. If you are in a safe place on the infield and the race remains green, do not take off your helmet or unbuckle your safety harness until you are brought safely back into the pit area. It is strongly recommended that the pit crew have a flashlight ready, to indicate to the tow truck driver where their pit stall is located.

In the event a driver abandons their car, such car will be towed into the infield, where it will remain until the conclusion of all the evening's races. anyone causing a disturbance at the flag stand, scorer's tower or on the track with an official may be suspended, fined or both. All personal property brought to the speedway by a team MUST be removed with them when they leave. This means tires, racecar parts, drained oil, etc. Please clean up after yourselves. Thank you in advance for your cooperation!

PROTEST PROCEDURES AND RULES
(For DIRT 358 Modifieds and DIRT Sportsman,
refer to 2023 DIRT Rulebook.)

1. Any affected driver or owner may, as a matter of right, protest any violation of the rules, including specifications, for the feature event only, subject to the limitations within this rule book. Visible protests must be made 10 minutes before feature events in writing, along with a \$50.00 protest fee. If a tool or mechanical device is needed by an official to determine a car's rule compliance that is not a visible protest situation.
2. For a subsequent appeal, and Ransomville official's measurement is presumed to be correct, absent a showing of a mistake or prejudice. No Protests shall be made in the final 2-point nights of the year.
3. All protests involving a particular event must be in writing specifying matter of protest and must be received by Ransomville officials no later than ten minutes following the checkered flag falling for the affected feature. Any competitor who institutes a tech tear down inspection must tear down their car as well. Each separate protest must be given to the pit steward accompanied by a \$100 protest fee (U.S. Funds), with the following exceptions:
 - (A) P & G Test \$100.00 (U.S. Funds)
 - (B) Any protest that requires opening a motor/transmission. (i.e., Bore and Stroke, Pull Pan etc.) \$300.00 (U.S. Funds).
 - \$250 (U.S.) going to the protested car if legal.
 - \$250 (U.S.) returned to the protester if car protested is illegal.
 - \$50 (U.S.) goes to inspector in each instance.
 - (C) \$100 each additional item protested.
4. All protest fees must be paid by the protesting team. No grouping together of teams to protest will be permitted!

5. A protest of race results may be verbally made to the pit steward within five minutes of the official announcement of the order of finish. A recheck of scoring will then be made if necessary and these results will be considered final. Only driver protests on racing results will be considered by the scorers. No appeal of the scorers' final decisions will be permitted.
6. Any car found illegal under protest, and/or pre- or post-race inspection at the discretion of officials shall receive a fine and/or loss of track points, and/or loss of finishing position for that event, and/or receive last place points and money, and/or outright disqualification from that event, and/or definite or indefinite suspension from Ransomville Speedway at the discretion of the chief tech inspector at that track!
7. If a race result is protested, the track promoter can, at his/her discretion, delay purse distribution until the matter is ultimately decided by the appellate board. Ransomville Speedway reserves the right to refuse any protest if the protest is deemed unnecessary and/or being used for harassing purposes.
8. Track scales are the official scales at each race event. No protest or appeal is permitted on the weight of the car as measured on the Track Scales.

POINTS SYSTEM– ALL DIVISIONS

1. Track points will be awarded for all events, unless sanctioned event is by invitation or otherwise stated. The number of cars in the heats, consolation and feature events are determined by the handicapper.
2. Track points will be awarded to drivers only with memberships. Drivers and owners must have track membership to obtain points or point fundmoneys.
3. In the event of a driver change during a point race event, the driver of the pace lap will earn the points based on their car's finish.
4. Point funds will be awarded to the owner of the race team as stated on 2023 memberships. Point fund money will be awarded at Banquet or Opening Day of the following season.
5. In the event that a tie should occur in the final Championship Point Standings at the end of the season, the tie will be broken using the following tiebreakers in order; Most feature wins, most second place finishes, most third place finishes, etc....., until the tie is broken.

2023 Points Breakdown:

| Finish Position | Regular Event |
|--------------------|------------------|
| 1 | 60 |
| 2 | 56 |
| 3 | 52 |
| 4 | 50 |
| 5 | 48 |
| 6 | 46 |
| 7 | 44 |
| 8 | 42 |
| 9 | 40 |
| 10 | 38 |
| 11 | 36 |
| 12 | 34 |
| 13 | 32 |
| 14 | 30 |
| 15 | 28 |
| 16 | 27 |
| 17 | 26 |
| 18 | 25 |
| 19 | 24 |
| 20 | 23 |
| 21 | 22 |
| 22 | 21 |
| 23 - last | 20 |



Kevin's Carpet Cleaning & Flood Services
Novice Sportsman Rules

1. Cars will operate under 2023 DIRT Sportsman rules. Novice Sportsman may forego the DIRT Fire suppression rules with a 50 lb weight penalty.
2. First time rookie competitors in the Novice Sportsman class who move up to the DIRT Sportsman class after July 1st, 2023 will still retain their Rookie of the Year status in the DIRT Sportsman class for 2023. Novice drivers that move up to Sportsman in middle of season will start tail in the Sportsman until management feels that the driver is ready.
3. Mini Stocks and Street Stocks will be allowed and encouraged to run the Novice Sportsman class on the same night as their regular class.
4. Special awards will be handed out at the end of year banquet for the top Novice Sportsman drivers.
5. The Novice Sportsman class is not mandatory for new Sportsman competitors. Rookies who feel that they are ready for the DIRT Sportsman class are more than welcome to start in the DIRT Sportsman class.
6. If track management deems a competitor over competitive, the track reserves the right to request that the driver move up to the DIRT Sportsman class.
7. Drivers who have driven in the Sportsman division in the past and have struggled are allowed to move back down to compete.
8. Novice cars with 5 wins in the season will be subject to having their motor pulled and sent to the dyno. Cars with PACE seals will not be subject to dyno.
9. The 2022 Champion will be required to move up to Regular DIRT Sportsman for the 2023 season.



Investor's Services DIRT Sportsman Rules
Current 2023 DIRT Sportsman rules will apply.

1. Sportsman cars with 3 wins in the season will be subject to having their motor pulled and sent to the dyno. Cars with PACE seals will not be subject to Dyno.



DIRT Krown Collision 358 Modified Rules
Current 2023 DIRT 358 Modified rules will
apply.

1. AMB Transponders, i.e., one-way radios, will be mandatory for all divisions. The frequency used will be 454.0000.



Sunflowers of Sanborn Mini Stocks Rules (Rev. 2/6/23)

Mini Stock Front Wheel Drive Rules

SAFTEY REQUIREMENTS:

- Aluminum Racing Seat mounted to roll cage with a minimum of 6 grade 8- 3/8 bolts. Full containment seat is strongly recommended.
- 5 Point Seat Belt mounted to roll cage w/recommended fasteners or wrap around style.
- Seat belt cannot be more than 5 years old.
- Driver's side window net w/quick release is mandatory. Net must be up and secure when on the track.
- Master Battery shut off mandatory and must be mounted on left side of dash within reach of safety crew and driver. Electric Fuel pump must turn off with switch also
- Window Net Release and Shut Offs must be clearly marked.
- Helmet 2015 or newer. Fire Protection to follow standard track rules. Minimum single -layer fire suit required. Fireproof gloves required. A head and neck restraint system is strongly recommended.

- RACEIVERS will be mandatory. Frequency 454.000.

REINIFORCEMENTS: Front and rear hoops permitted with min. 1 ½x .095 round tubing. Front hoop is intended to replace upper radiator support and upper frame rails and should follow same. Tubing must be 1 continuous tube and welded to the front of the front strut towers (rear of rear strut towers). 2 down tubes each allowed from upper tube to lower frame rails. Roll cage or 2x2 tubing allowed to connect front and rear lower frame rails together in driver compartment along floor.

Stock Body requirements:

- Outer door panel skins of same gauge sheet metal are permitted to allow for door bars but MUST have 4 bars on driver's side. Doors must be welded, chained or bolted shut.
- Sunroof and firewall holes must be covered with at least same gauge sheet metal with rivets, bolts or welding. Engine/fuel area must be sealed off from driver.
- Hoods and trunks must be secured w/2 safety pins each when using hinges or 4 without hinges.
- Glass must be removed, and screen placed in windshield area with 2 support rods.
- Exterior door bars permitted with 1" x 1" square tubing. All exterior tubing must be tight to the body and securely fastened. Ends must be welded closed without any sharp edges. Front and rear tow chain loops are mandatory.

FUEL TANK/CELL: Stock fuel tank permitted as long as it is ahead of rear axle and must be securely fastened with at least 2 straps (additional is recommended). Racing fuel cell is allowed. Fuel cell must be mounted in a safe manner. A firewall Must be in Place between driver Compartment, and fuel cells, fuel lines or tanks. All fuel cells must have rubber flaps.

Body/ Wheels/ Tires:

- Any front wheel drive car. No All-wheel drive cars or all wheel steer cars.
- Must have stock rear and front Suspensions as from factory. Slotting of factory mounting holes allowed. No racing spring lowering or shocks allowed. Springs may be heated, clamped or use spring rubbers. Spring must be within 2" of factory installed height.
- Rear Control arms should be stock but be braced/strengthened/repaired. No aftermarket. Stock production cars only.
- Must have quality welded minimum 4-point roll cage inside the with a minimum of .095" thickness tubing. Tech has final say in safety of cars.
- Minimum 3 drivers door bars/ 2 side door bars - 6 or more-point cages ok. Drivers' door intrusion plate mandatory.
- No push bars past firewall. Roll cage may extend forward behind bumpers. Bumpers must be covered in some way with no exposed sharp corners.
- Aftermarket Racing Wheels Permitted. Maximum wheel width seven inches (Measured inside of bead to inside of bead). Bead locks allowed.
- Street legal DOT tire required. No Drag radials, mud grip lug tires, racing tires or racing recapped tires allowed.
- Directional tires are allowed. Tires can be mixed or matched for stagger.
- Aftermarket nose pieces allowed.
- 6' metal support to extend out behind nose piece or to hold grill in place allowed.
- No push bars to extend outside bumpers or beyond nose piece.
- No Mirrors are allowed.
- Cars should remain as close to stock appearing as possible. Gutting of Body is allowed.
- Can buy aftermarket 5 star body, or build your own out of sheet steel or Aluminum.

ENGINE: Must be a Stock 4-cylinder Car. Motor Must Be Stock Appearing. No turbo chargers or rotary engines allowed. Stock type fuel injection or stock manufactured carburetor only (Motorcraft, ect.) 0.800" maximum throttle body spacers may be used. No Holley , Weber or other racing carburetor allowed. Motor Must be stock appearing and in stock location. Motor must match car (ex- Honda - Must have Honda Engine, ect.)

Any air or oil filters (K&N , ect.) Intake Must be Stock intake. No Skunk 2, ect.

No Cold Air intake or fuel injection-must be stock type breather system. A flexible rubber or plastic hose may be used in place of a stock air box tube. No Smooth metal or plastic tubes allowed. Aftermarket radiators are allowed. Radiators can be braced for support. Aftermarket racing headers are allowed. No Stainless Steel. No Coated. Computer may be chipped and or tuned. A standalone ECU and aftermarket harness allowed. Ignition coil must remain OEM.

WEIGHT: Minimum weight is 2250 lbs. with car and driver at the completion of race.

All added weight must be painted white and include car #. Any racecar will be disqualified if weight falls off.

EXHAUST: Exhaust recommended to exit behind driver

DRIVESHAFTS – Must be painted white

Mini Stock Rear Wheel Drive Rules

#1 – Body

- 1.1 STOCK APPEARING BODIES ONLY! Can buy aftermarket body packages from 5 star Bodies or Performance Bodies or make your own bodies from steel or aluminum will be legal. No spoilers over 4 in tall, including sides.
- 1.2 Rear body must be closed in.
- 1.3 Any 4-cylinder Rear Wheel Drive front engine Car.
- 1.4 **NEW IN 2023** Minimum weight 2300 lbs. with car & driver at completion of the race.
- 1.5 Recommend tying front frame to rear of car with 2×2 and attach roll cage to 2×2 but not mandatory.
- 1.6 Must have complete 4-point cage installed in professional matter 1 1/2" .095 tubing min 3 door bars on driver's side. 6-point cage with 4 driver and 3 passenger side door bars strongly recommended.
- 1.7 Aluminum racing seat and 5-point harness mandatory! Seat must be attached to roll cage with at least 6 Grade 8 3/8 bolts. Belts must not be older than 5 years and properly attached to roll cage.
- 1.8 12-gal max racing fuel cell **STRONGLY** recommended. If running stock fuel tank must have steel skid plate and be securely mounted.

#2 – Front / Rear Suspension

- 2.1 Chassis must retain stock type suspension. **NO** adjustable spring pockets allowed.
- 2.2 Wheelbase must be stock for that make/model car. Wheelbase **MUST** be square within a 1/2" tolerance on both sides.
 - 2.2.1 Tracking of cars will be strictly enforced!
- 2.3 Only Steel Body Non-Adjustable Shocks Permitted. Maximum new cost of \$100 per shock or strut.
- 2.4 No rebuildable or re-valving of shocks at all!

#3 – Engine

3.1 Must be A stock 4-cylinder Car. Engine must be Stock Appearing. DOHC engines are allowed. No Rotary Motors Allowed

3.2 No turbo chargers, only naturally aspirated motors.

3.3 Must be same engine for make.

3.4 Stock intake may be machined, porting allowed.

3.5 No high performance ignitions or ignition boxes. OEM only.

3.6 Stock carburetors, stock fuel injected or stock Holley 2 barrel 4412 or 4412s carburetors must pass track tech inspection tools.

3.7 Headers allowed . Stock manifolds are allowed.

3.8 OEM 12volt ignition systems only.

#4 – Transmission, bell housing, drives shaft

DRIVETRAIN: transmissions, differentials, flywheels and torque converters must remain stock. No lightening. Clutch and pressure plate must be Stock. A 1” hole in bell housing in line with clutch mandatory. Transmission must have ALL working gears. No light weight driveshafts. Cars may have locked differentials.

4.1 Front and rear hoops strongly recommended

#6 – Tires and Wheels

6.1 Steel racing wheels 7" wide. Bead locks allowed.

6.2 DOT Tires

NO WHEEL SPACERS. Maximum 2" wheel offset.

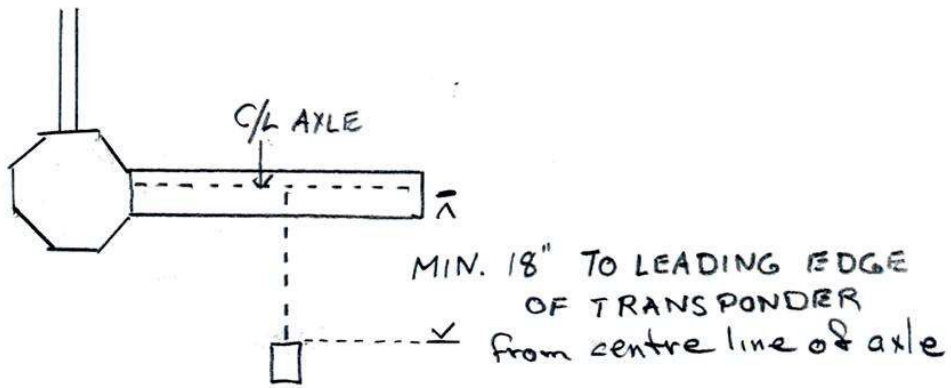
Camber – No more than ¾” positive or negative on any wheel

#7 – Other

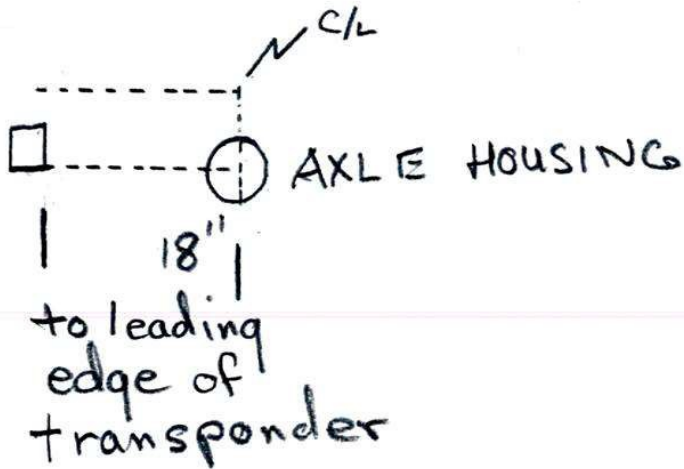
7.1 EXHAUST: Exhaust recommended to exit behind driver. Maximum exhaust size is 2.5” OD. Stock manifolds or headers allowed. Exhaust must not run through the interior of the car

7.2 DRIVESHAFT – Must be painted white

TOP VIEW



SIDE VIEW



NOTE: While the above rules offer a good outline, not everything can be covered by a written rule. If a car has a part that no one else has, and it's not mentioned in the rules, it's not assumed legal. Ask First.

2023 Ki-Po Motors STREET STOCK RULES



#1 – Body

- 1.1 Any American made, rear wheel drive car or pickup.
- 1.2 Minimum wheelbase will be 107” with a 1” tolerance
- 1.3 Full frame cars may replace rear frame after kick ups with 2 x 3 tubing.
- 1.4 Stock unibody cars may replace with 2 x 3, 36” back from centerline of front wheels, must go over the top of rear-end housing.
- 1.5 BRP (Camaro clip) late model chassis allowed, must be converted to either F body (leaf) or G body (coil) rear suspension. Must be converted to 2 x 2 or 2 x 3 rails, from the point of termination of the stock clip rearward. Up rails back may be tubular.
- 1.6 Minimum weight of 2900 lbs except 400 cubic inch motors – must weigh 3000 lbs with driver, after completion of race. Track scales will be used to determine legal weight. All lead must have car numbers on t h e m .
- 1.7 4-point roll cage minimum, with 4 door bars on driver's side, front, and rear hoops. 1 ½” .095 tubing minimum. Driver's door intrusion plate mandatory.
- 1.8 Stock steel bodies allowed, optional aftermarket steel or aluminum bodies (AR bodies, 5 Star bodies, Performance bodies) legal. Rear windows on cars using station wagon bodies remain open at all times. 5” spoiler allowed with 5” sides. Plastic fenders allowed.
- 1.9 Maximum body width 82”.
- 1.10 Must run stock type nose (no MD3, or Dominator type late model). Tail pieces optional.
- 1.11 Must run rear bumper, minimum 12” off track surface, and remain inside of rear quarter panels.
- 1.12 Cold air boxes allowed.
- 1.13 All cars must be presentable.

#2 – Front Suspension

2.1 All suspension and steering components must be in stock location. Any OE style lower control arm allowed except tubular style not allowed. Steel tubular style upper control arms, shocks, and tie rods may be changed to Heim ends. Heim end tubular upper controls arms allowed. After market center links allowed.

2.2 Steering quickeners allowed.

2.3 Jacking bolts allowed.

2.4 One non-adjustable, steel body shock per wheel, mounting location optional, no Schrader valves, or coil-overs allowed. Any gas ports must be sealed.

2.5 No bump stops allowed on any shock. Internal or external, or any located anywhere on the chassis.

#3 – Rear Suspension

3.1 Leaf springs allowed, Chevy or Chrysler.

3.2 No pull bars. No 3 link. No Panhard or jbars allowed.

3.3 Floater rear-ends allowed. No gun-drilled axles, no wrap-up axles and both axles (left to right) must be same diameter. Solid axles only. Steel spool only. No lockers or traction devices. No cambered styLEDrive flanges allowed.

3.4 No quick change rear-ends allowed.

3.5 Rear end side, arm/housing brackets must be in stock location horizontally on axle tube. Arms can be located anywhere vertically in brackets, no more than 6 3/4" from housing.

3.6 Coil springs must be mounted straight above the axle and 34 inches center to center.

3.7 Chassis side mounting brackets (upper and lower) must be in stock locations (+/- 1"). Must be stock width and stock height.

Upper bars chassis side – can only use three holes on the right side and three holes on the left side. The three holes on the right side must match the left side, vertically only. Open holes must be plugged.

Lower bars chassis side – can only use three holes on the right side and three holes on the left side. The three holes on the right side must match the left side, vertically only. Open holes must be plugged.

Upper and lower holes must be within one inch of the center hole. All coil cars must be double triangulated 4-link. Upper links must run from the rear-end housing inward to outward. Lower links must run outward to inward.

3.8 Rear clip must be centered with front clip.

3.9 Rear control arms may be converted to adjustable rods with Heim's but must retain stock length (+/- 1"). Mono ball also allowed. No spring rod or biscuit style control arms.

3.10 One non-adjustable, steel body shock per wheel, mounting location optional, no Schrader valves, or coil-overs allowed. Any gas ports must be sealed.

3.11 No coil spring shock sliders anywhere on car

#4 – Engine

Option 1:

Factory sealed 602 crates with stock venture Holley 650 carb (4777, 80777, or 4150 HP allowed).

Option 2:

4.1 All engines must remain stock stroke configuration for that manufacturer and cubic inch. Stock or stock replacement, unaltered crankshafts only. Minimum 46 lbs, no lightening or knife edging. No billet or aluminum rods.

4.2 Flat top or dished pistons only, no part of the piston may extend above deck surface of block.

4.3 Maximum overbore – GM 350.070, Ford 351.070, Chrysler 360.040, GM 400.040.

4.4 Stock production blocks only.

4.5 Cast iron stock production heads, bowtie heads (no bowtie vortec permitted), Dart SS10021070 or 10021010, World Products 043600 or 043610 with max 2.02 intake and 1.60 exhaust valve. Vortec 906 and 062 heads allowed. Dart 180 only – part #'s 10110010F or 10110010. Engine quest heads allowed Ch350c, ch350h. Ford N heads not allowed.

4.6 No titanium valves allowed.

4.7 No porting of heads allowed.

4.8 Roller rocker arms allowed, max ratio of 1.6 – can be mixed. No shaft rockers unless factory stock.

- 4.9 Screw in studs, guide plates, and stud girdles will be permitted.
- 4.10 No Roller camshafts. Must have OEM firing order.
- 4.11 Engine setback MAX, center of number 1 spark plug hole in line with center of upper ball joint.
- 4.12 Factory stock distributor, points or HEI permitted.
- 4.13 12-volt electrical system only.
- 4.14 Holley 4412 or 4412s, HP, or XP carbs allowed. Stock 1-3/8" ROUND venture size, all carbs must pass with track tech tools. Base plate butterflies cannot exceed 1.688". Must have two return springs. throttle stop recommended.
- 4.15 Stock cast iron 2 barrel, or optional aluminum intakes permitted. No porting, No marine, and No military intakes allowed. Weiand 7547-1 (chevy), 7515, 7516 (ford), 7545, Edelbrock 5001, 2116 (chevy), m 5021, 5081, 5076 (Chrysler), and GM GMPP 602 crate intakes will be permitted. Weiand 8150, Edelbrock 7116 allowed.
- 4.16 Any aluminum 2-barrel adapter, maximum adapter thickness of 1 1/8" with gaskets.
- 4.17 1-5/8 or 1-3/4 headers only, crossover headers or conventional down under headers or side exit allowed. No step, tri y, 180 degree, or late model style headers. No merge collectors and two into one.
- 4.18 Mufflers mandatory, must exit behind driver. 3" pipes maximum.
- 4.19 Site plug mandatory 3-6 inches from front of pan on left side.
- 4.20 Stock style fuel pump. No rear bell housing drive accessories allowed.

#5 – Transmission, Bellhousing, Driveshaft

- 5.1 Any transmission, automatic or standard allowed. Standard must have steel bellhousing or blanket.
- 5.2 Steel driveshaft painted white.
- 5.3 Driveshaft hoops mandatory, 6" from front U-joint and another in the middle of the driveshaft.
- 5.4 Bert/Brinn/Falcon style tranny allowed. Outboard starter style bell housing allowed.

#6 – Brakes

- 6.1 4-wheel brakes mandatory. No brake shut-offs.
- 6.2 OEM calipers only. No floating calipers allowed.
- 6.3 Aftermarket master cylinder allowed.
- 6.4 Remote brake adjuster allowed.

#7 – Tires and Wheels

- 7.1 Steel wheels only with a maximum width of 8”, bead-locks allowed. No bleeders.
- 7.2 No wide 5 hubs allowed.
- 7.3 Must have racing type 1” lug nuts.
- 7.4 American Racer and Hoosier 26.5/27.5 8” tires stocker or E-mod only. Medium or harder only, no softs allowed. American Racer 245/70/2015 DIRT compound non-DOT tires also permitted. No snows, aggressive tread, or duals permitted. No chemical treating.
- 7.5 Wheel covers allowed – no plastic. Must be bolted by a minimum of 3 bolts.

#8 – Safety

- 8.1 All cars must have an aluminum racing seat safely installed with no less than 6 bolts (subject to tech).
Full containment seat recommended.
- 8.2 All cars must have a window net securely mounted. Net must be up and secure when on track.
- 8.3 All drivers must have a WORKING one-way radio on the 454.000 frequency.
- 8.4 All fuel cells must have rubber flaps and foam.
- 8.5 All cars must have chain on front bumper.
- 8.6 Seatbelts must be within two years.
- 8.7 Transponders must be mounted from the center of the rear axle rearward 12 inches to the front of the transponder. Transponders are mandatory at all times.

*BRP and Hybrid (f/g combined) chassis guidelines and rules subject to change if chassis is proven to be over dominant.

ALL CRATE ENGINES MUST HAVE SNAP BOLTS FROM GM, OR THEY WILL BE SUBJECT TO TECH AND TEARDOWN.

ALL OFFICIAL AND TECH RULINGS ARE FINAL!!

While the above rules offer a good guideline, not everything can be covered by a written rule. If you have any questions, ASK FIRST. Any non-covered part can be deemed illegal at any time. Anything not covered in these rules is not assumed legal.